

Florida Alpaca & Llama Association Inc.

www.falainc.com

APRIL 2026

A Note from the President

Spring is here and moving quickly toward summer! I hope everyone has either scheduled shearing or already had their animals shorn. With the Florida heat right around the corner, it's essential that our camelid friends are relieved of that year's worth of fiber. Providing plenty of shade, along with pools, sprinklers, and fans, will help keep them comfortable. Don't forget that free-choice electrolytes can also play an important role in keeping them properly hydrated during the hotter months.

Inside this issue:

Highlights from FALA Winter Classic	2
Getting the Most Out of Your Fiber Harvest	6
2026 FL State Fair Highlights	7
FALA Fiber at the FL State Fair	9
Calendar of Events	10

This spring season has flown by, and we're looking ahead to some exciting events. On April 25th, we'll be heading to the mountains of North Carolina for a pack trial, while also hosting a youth fun show at the Hernando County Fair. If you've ever thought about hiking in the mountains with your llama companion, this is a great opportunity to join in and experience the fun.

In the coming months, we'll also be offering educational sessions and hands-on fiber opportunities, so keep an eye out for upcoming dates. As we ease into the summer and give our animals a break from travel and hiking, it's a perfect time to begin working on fiber projects. These creations can be showcased at the Florida State Fair in February 2027.

Be sure to join us on May 17 for our next meeting at the Millers' Beautiful Creatures Animal Ranch. We look forward to seeing everyone there!

Happy Humming!

*Sarah Strautmman
Heaven Sent Ranch
FALA President*

*The information printed within this publication is for informational purposes only. Always rely on your veterinarian for advice and treatment. The opinions expressed in articles, letters, ads and editorials are solely the opinions of the author(s) and do not necessarily express the views of FALA. Acceptance of advertising/bulletin board items does not imply endorsement of products or services. Articles, letters, pictures and other contributions are welcomed.

2026 FALA WINTER CLASSIC

Thank you to everyone who participated in the 2026 FALA Winter Classic, whether exhibitor, volunteer, or something in between!

Special thanks to the course designers, who made some really fun and creative courses. And an additional thanks to the scoring table who worked late into the evening and kept the show running!

Bella Wehner



2026 FALA WINTER CLASSIC



2026 FALA WINTER CLASSIC



2026 FALA WINTER CLASSIC



GET THE MOST OUT OF YOUR FIBER HARVEST



The goal at the end of shearing is to finish with the highest amount of usable alpaca fiber.

USABLE FIBER IS:

FREE OF ALL CONTAMINATION
SEPARATED BY COLOR & GRADE
UNIFORM IN STAPLE LENGTH
& MICRON COUNT

STREAMLINE SHEARING

Prepare: Band samples & identify fleeces going to shows or to processing.

Your Shearer: Seek a shearer months in advance. Communicate your goals with them.

Your Help: Educate & assign staff, family & volunteers to specific tasks.

Work Smart: Keep the queue moving with a 2nd shearing station. Shear from lightest to darkest & clean areas in between.

CONTAMINATION

Contamination is the #1 reason that fleeces are downgraded or discarded. Prevent contamination before shearing begins!

- Utilize low hay feeders
- Clear pastures of thistle & burdock
- Clean shearing area, barnyards & stalls
- Use shredded cardboard or straw bedding (not hay)

WHAT TO AVOID:

VEGETABLE MATTER (VM)
FARM DEBRIS
COLOR CONTAMINATION
SECOND CUTS
GUARD HAIR

CLASSING

Blankets:

Remove in one piece. Send straight to the skirting table, cut side down

Leg & Neck:

Keep together

Apron, Belly, Coarse Fiber:

Remove immediately

Keep different sections of fiber separate as they come off the animal & leave grading to the professionals.

LIGHT SKIRTING

Skirt the fleece as it comes off the animal. Do NOT tumble your fleeces!

Use a wire mesh top skirting table. Keep each skirted fleece separate regardless of color.

SKIRT OUT:

EXCESSIVE GUARD HAIR
ARMPIT HAIR
SECOND CUTS
VEGETABLE MATTER
DIRT, DUNG & DEBRIS

PACKAGING

Roll individual fleeces in newspaper or place in small plastic bags for **short-term storage & shipping**. Combine into larger bags to be sent for processing.

Put completely dry fiber in paper lawn & leaf bags for **long-term storage**.

Put fiber to use soon after harvest or you may lose it to rodents, moths, or mold & mildew contamination.

2026 FLORIDA STATE FAIR LLAMA SHOW

What a great weekend of Camelid camaraderie fun at the Florida State Fair. Great group of kids, super adult exhibitors and a beautiful weekend. Thank you Florida Alpaca and Llama Association for Sponsoring Youth Showmanship Belt Buckles. Thank you to all the volunteers, exhibitors and Fair staff that made this a great weekend.

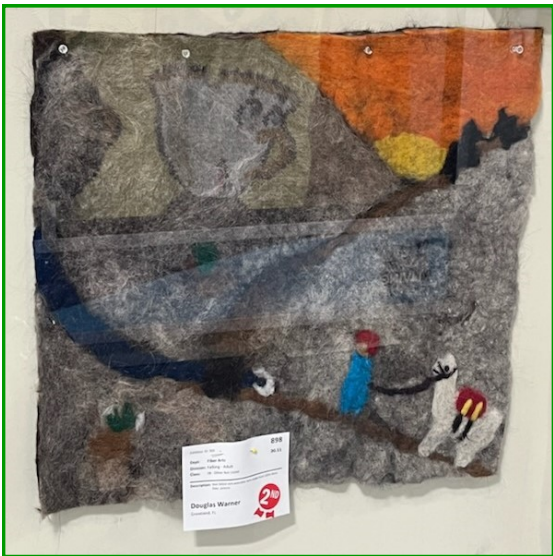
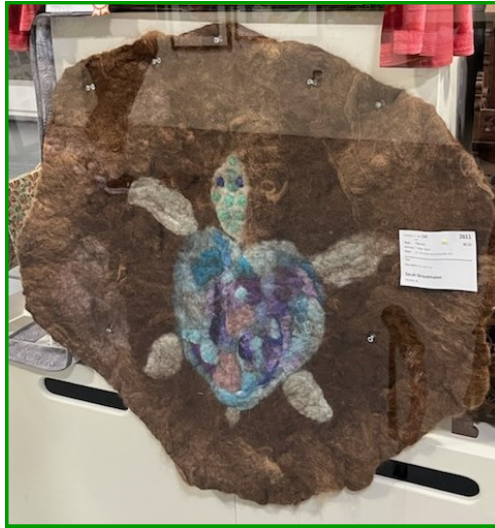
Mary Rose Collins



2026 FLORIDA STATE FAIR LLAMA SHOW



2026 FLORIDA STATE FAIR FIBER SHOW





2026 Calendar of Events

April 24-26, 2026 — SSLA Spring Pack Trial
DuPont National Forest, NC
Visit ssla.org for information.

May 17, 2026 — FALA Meeting
Beautiful Creatures Animal Ranch, Dunnellon, FL

- ★ Need to re-home a llama or alpaca? Contact Claudia Hammack, llamachick@yahoo.com
- ★ Youth interested in showing a llama or alpaca for FFA, 4-H, or for fun? Contact Tracy Weaver, lotsallamas@earthlink.net



2026 Florida State Fair Youth Llama Show